



**JOINT COMMITTEE OF BEAMISH, THE NORTH OF ENGLAND OPEN AIR MUSEUM  
20<sup>th</sup> September 2013**

**PROPOSAL TO ESTABLISH A REGIONAL STAKEHOLDER GROUP  
REPORT OF THE MUSEUM DIRECTOR**

**1. Background and purpose of the report**

- 1.1 This document has been prepared for Beamish's key partners in North East Local Authorities, following a review of the regional open air museum's governance arrangements in 2012/13 and 2013/14. The key recommendations contained in the review were approved by Beamish's Joint Committee at their Annual General Meeting on 5<sup>th</sup> July 2013. Legal agreements outlining the changes are being circulated to all North East Local Authorities for their approval in July/August 2013.
- 1.2 This report has three objectives:
- a) Provide a brief summary of the outcomes of the governance review underway since 12<sup>th</sup> March 2012;
  - b) Outline a proposal to establish a Regional Stakeholder Group, with an explanation of its purpose, benefits and form/membership; and
  - c) Summarise the next steps and timescales.

**2. Outcomes of Beamish's governance review**

- 2.1 Working through ANEC, the objective of the review was to consider how best to develop Beamish's partnership with all North East Local Authorities, taking into account the needs of the museum's future plan 2013-2025 and clear demand for new ways of working with Local Authority and other key stakeholders to provide support and produce tangible, mutual benefits.
- 2.2 A Regional Advisory Panel was formed during 2012/13 with two meetings held to shape the recommendations of the review, engaging ANEC and lead officers/members from all 12 North East Authorities as well as representatives from key partners at the Arts Council England and Heritage Lottery Fund.

- 2.3 The Regional Advisory Panel considered the current governance arrangements at Beamish (see appendix A) and recommended a number of changes to the roles and responsibilities of Beamish's Joint Committee; Beamish Museum Ltd (operating charity); Beamish Development Trust (a fundraising organisation engaging business leaders); and the Friends of Beamish. Officers from Sunderland City Council and Durham County Council also considered a number of technical matters including VAT, financial management, legal agreements/leases, and pension issues.
- 2.4 The new governance model recommended by the Regional Advisory Panel and subsequently approved by the Joint Committee of Beamish in July 2013 is set out in Appendix B. The recommended changes can be summarised as:
- a) Developing further the invaluable fundraising work carried out by the Beamish Development Trust by integrating this group of business leaders within the Friends of Beamish, forming a new working group called the 'Business Friends of Beamish'.
  - b) Reviewing the role of Beamish Museum Ltd, with the charity taking on a 50-year lease for the museum and its collections from the freehold owner Durham County Council and entering into legal agreements with DCC to take on responsibility for procuring and managing capital developments.
  - c) Reviewing the membership of Beamish Museum Ltd, with a new Board comprising 15 trustees with 8 being Local Authority nominated trustees from core LA partners (including Chair); 1 being a nominated trustee from the Friends of Beamish; and a further 6 being co-opted Trustees. It is recommended that Local Authority representation be secured by a minimum revenue contribution of £5,000, with constituent authorities dividing up the eight nominations (including Chair) according to the proportion of their respective contributions.
  - d) Maintaining the existing Teesside Pension Agreement with existing Local Authority partners continuing to confirm the community benefit of Beamish Museum and its membership of the Local Government Pension Scheme, and collectively providing a guarantee for the historic LGPS pension deficit that Beamish Museum has (currently estimated at £1.8 million).
  - e) Dissolving the Joint Committee of Beamish, responding to demand for greater partnership working with Local Authorities through forming a new Regional Stakeholder Group, working through ANEC and engaging members and officers from all 12 North East Local Authorities in a light touch and appropriate way.

### **3. Proposal to establish a Regional Stakeholder Group**

3.1 The Regional Stakeholder Group has been shaped by consultation with Local Authority and other key partners including the HLF and Arts Council England. It has three objectives:

- a) Provide a light touch but effective way for partners to influence Beamish Museum's policy and strategy, scrutinising decisions and reviewing future budgets/plans through an annual review meeting held every autumn, ensuring that the educational, cultural, community and economic benefits of the museum are genuinely felt across the region.
- b) Develop a regional forum for developing and resourcing effective partnership working, focussing on delivering projects that generate mutual benefits in a way that links to regional work led by ANEC and does not cut across other organisations working in the region.
- c) Focussing on delivery and meeting the needs of partners, providing support to partners where appropriate and only when Beamish can genuinely add value, considering a range of agendas including museum education; marketing; skills/apprenticeships; cultural tourism; community engagement/volunteering; and developing resilient business models.

3.2 It is anticipated that the Regional Stakeholder Group will generate a number of tangible benefits both for Beamish and its partners, including:

- Enabling all North East Local Authorities to re-engage with and influence Beamish's work in an appropriate and effective way, without requiring a revenue contribution.
- Bringing North East Authorities together to restate their commitment to Beamish, recognising the regional benefits of the museum.
- Encouraging more partnership working between Beamish and its stakeholders, feeding into the ANEC Cultural Partnership and focussed on generating resource to deliver regional programmes with clear and mutual benefits.
- Creating inspiring learning programmes for schools to encourage more children from across the North East to enjoy learning in museums; building capacity locally and working towards an ambition to provide sponsored school visit to Beamish for every NE primary school child.

- Deepening the economic impact of Beamish across the region and demonstrating the value of investing in cultural tourism, developing more joint working.
- Working together to develop the activities offered in museums and cultural venues for people living with a dementia, creating a greater understanding of impact and ensuring access for people from across the region.
- Enabling Beamish to support partners with a range of issues including developing resilient/sustainable business models and community engagement/volunteering.

3.3 It is proposed that the Regional Stakeholder Group will be comprised of member and officer representation from all 12 Local Authorities, with up to three representatives invited from each Local Authority. It is hoped that the lead members and officers for culture will be able to attend, although they may wish to nominate a relevant substitute. Depending on the items on the agenda for discussion, it is anticipated that relevant stakeholders will be invited to attend from time to time, including for example Destination Management Organisations, HLF, and Arts Council England. It is anticipated that Beamish will seek funding from the Arts Council's Major Partner Museum programme to help provide resource for joint projects delivered through the group. Further funding for delivery will be sought from the public and private sectors.

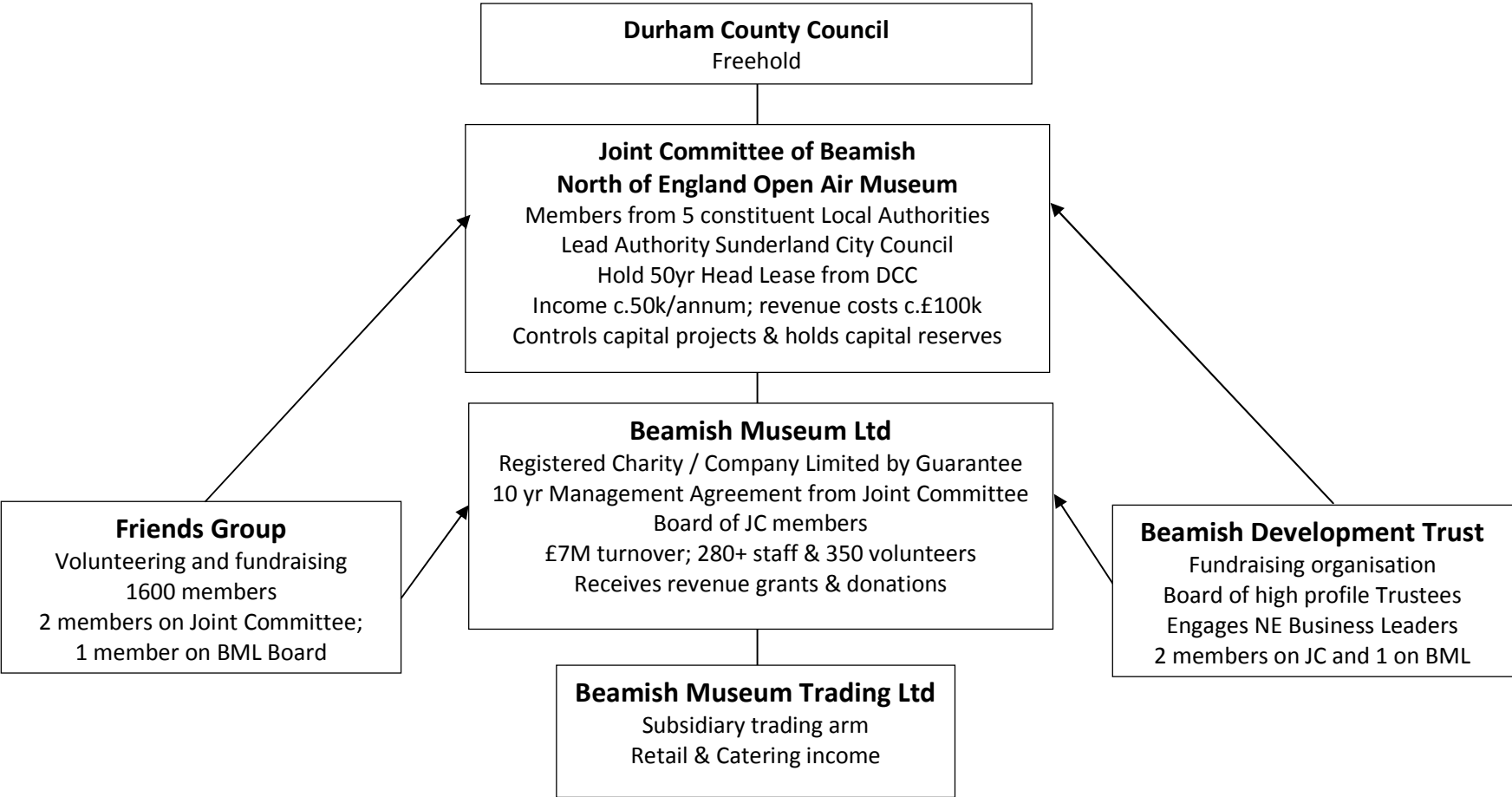
3.4 It is recommended that a joint Memorandum of Understanding be drafted between Local Authority partners, to clearly establish the terms of reference as well as the purpose and objectives of the group. It is anticipated that the group will meet three times per year, with the first meeting in October 2013 held to agree the draft Memorandum of Understanding, review performance in 2013/14 and look ahead to Beamish's priorities and plans from 2014/15.

#### 4. Next steps/timescales

<u>Date</u>	<u>Action</u>
5 July 2013	Joint Committee approval of new governance model
August/September 2013	Legal agreements circulated to constituent Local Authorities for approval: Agreement to Dissolve Joint Committee and form Regional Stakeholder Group; New Memorandum and Articles of Association for Beamish Museum Ltd; Lease to BML from DCC.
20 September 2013	Joint Committee meeting – update for members
26 September 2013	ANEC Cultural Partnership meeting – briefing
25 October 2013	First Regional Stakeholder Group Meeting at Beamish

**Richard Evans**  
**Director, 17<sup>th</sup> August 2013**

**APPENDIX A: CURRENT ORGANISATIONAL CHART 2013**



**APPENDIX B: FUTURE ORGANISATIONAL CHART FROM 2014**

